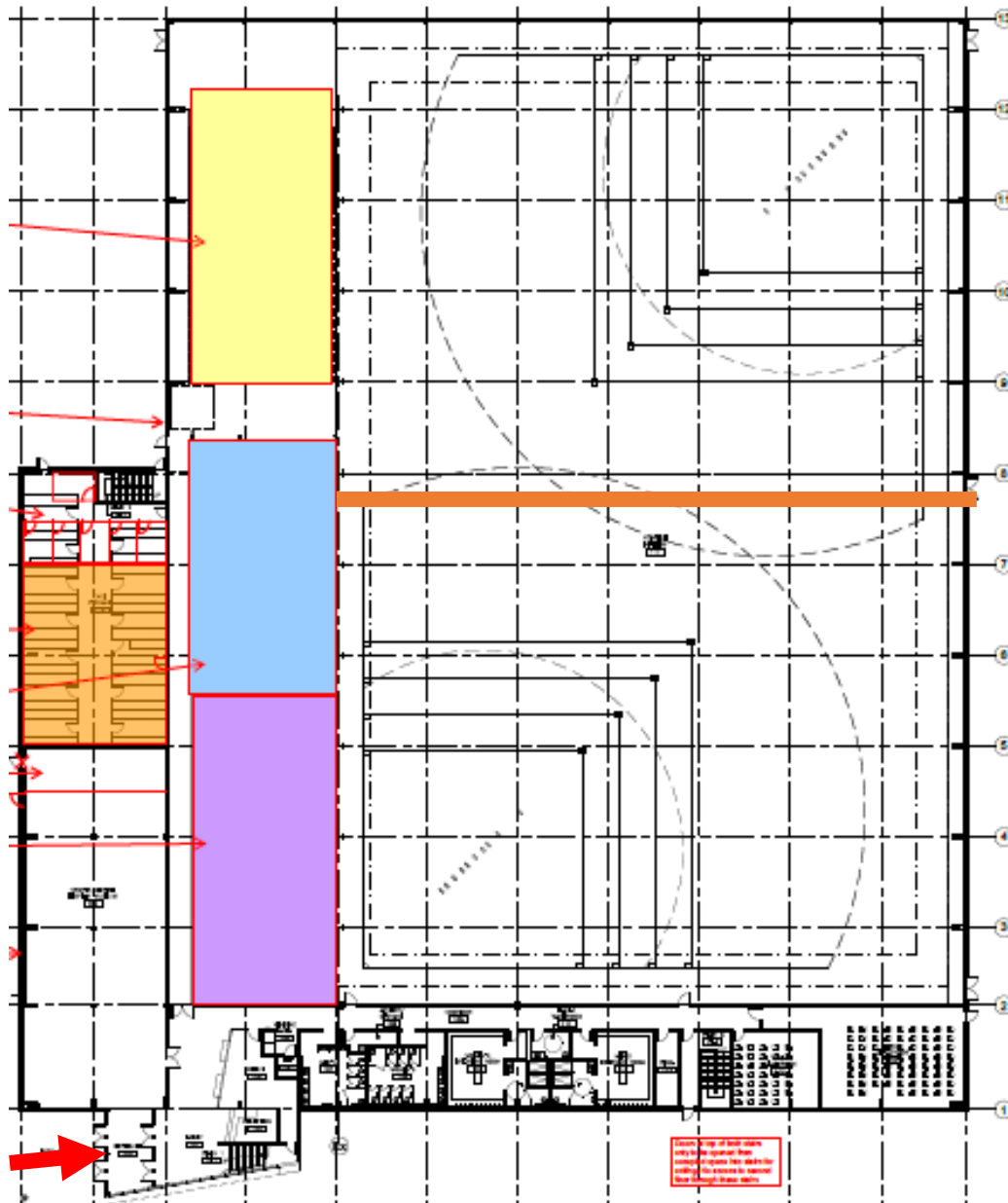


## Gordie Howe Sports Complex Indoor Facility Information



**Enter at red arrow.**

**Field 1 (South)** bottom of diagram, **Field 2 (north)** at the top. There is a curtain dividing and will be moveable as of mid-June

**Yellow – baseball batting tunnels** B1(left), B2 (Middle) and B3 (right) as you look at diagram

**Blue - Softball batting Tunnels** S1 (left), S2(middle) S3 (right)

**Purple – Pitching Tunnels** P1 (left), P2(middle) P3 (right)

# Indoor Turf Area

Click [here](#) for rates

Click [here](#) to book

Indoor turf field –full field – 90 yds x 50 yds or 271 x 175 = 47,425 sf

half field- 45 yards x 50 yards or 135.5 x 87.5 =11,856 sf

The turf is Double Play, 2 inches long and designed specifically for softball and baseball, (shorter and tighter than football and soccer) will provide true hops for ground balls. Bases can be laid out for 2 full infields and we have screening surrounding the whole area. The roof is 44 feet high with 40 feet clear of spans for fly balls. (highest indoor facility rood in city)

Equipment included- indoor balls, pails and carts, pitching mounds/rubbers and batter's box can also be included to play modified games.

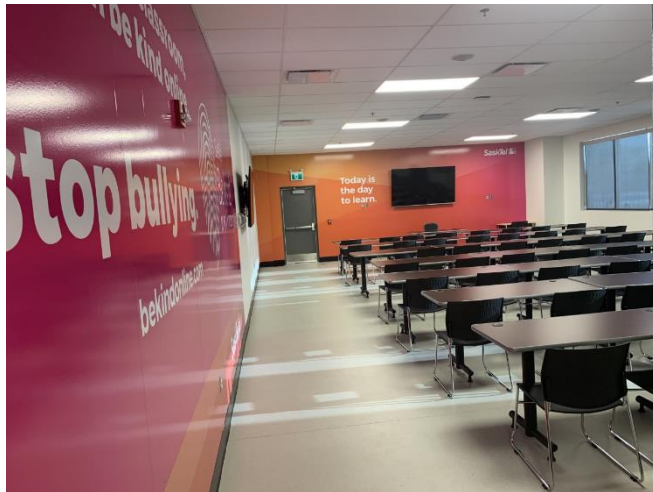
**FungoMan Practice Machines are available to rent** - A revolutionary and patented ball-feeding system ensures perfectly placed balls that can fire every three seconds with speeds over 100 mph, allowing players and coaches to run basic to advanced pre-scripted pitching or fielding drills.

[https://www.youtube.com/watch?time\\_continue=6&v=ol0qYp-ZcjE](https://www.youtube.com/watch?time_continue=6&v=ol0qYp-ZcjE)

# Classrooms

Click [here](#) for rates

Click [here](#) to book



**The SaskTel classroom** normally has seating for 56 at tables. The maximum number of chairs in the large classroom is 70, but not if tables are used. **The small classroom** has 35 desks with flip ups. There is one large monitor at the front of each classroom with the large classroom also having 2 smaller ones on the sides. The mid room speakers will project sound. To hook up to these you will need

an HDMI connection on your computer. These are perfect meeting room spaces.

# Pitching Tunnels

Click [here](#) for rates

Click [here](#) to book

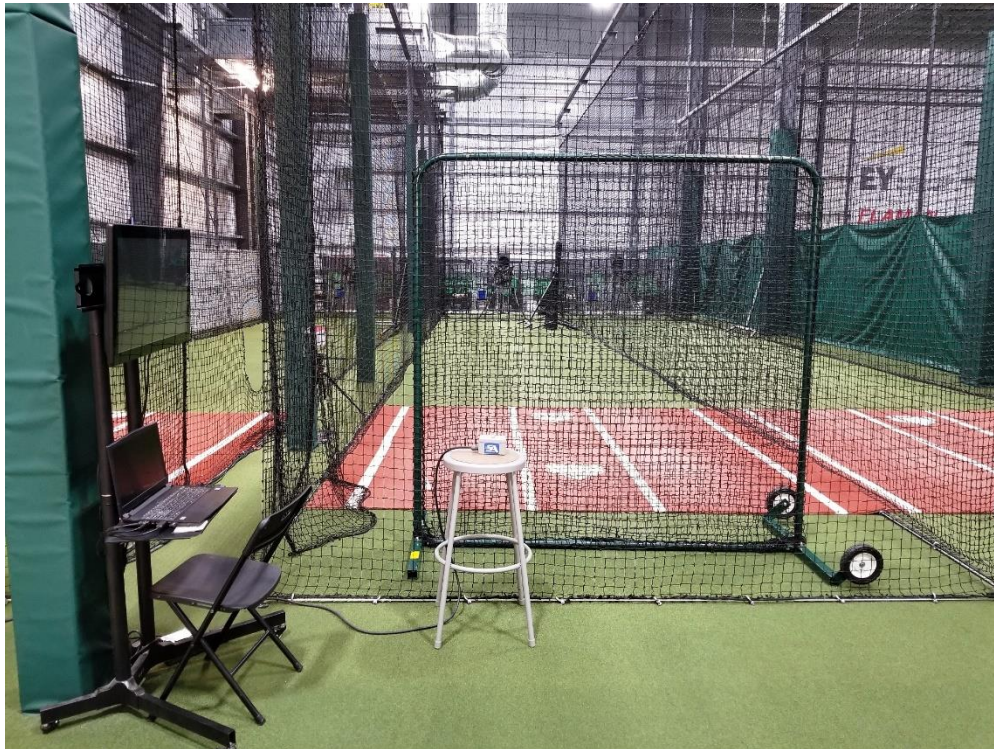


3 pitching tunnels P1, P2 and P3. Each tunnel includes plates, mounds and rubbers and we supply the balls.

It is completely curtained off and features field hockey indoor turf. Great for pitching, fielding, hitting soft toss and off the tee.

**Batting Tunnels** - Click [here](#) for rates

Click [here](#) to book





**S3 and B3 with Hack attack** – Dialed controlled hack attack, perfect for all ages and coaches interested in setting up the machine with one pitch at a time. See the information section following. These are the easiest tunnels to start with, as all you do is check the setting from the chart provided and set the dials to the pitch and speed you want. It also has team feeders and remotes for easy loading of balls.

**S2 and B2 with e-Hack Attacks** – They have all the features of the dialed Hack Attacks when set on manual mode and thus can be used for beginners to pros. For the more advanced players, it has the added feature of being able to set and store sequences of pitches as it controlled electronically. It also has team feeders and remotes for easy loading of balls

**S1 and B1 with e-Hacks and HitTrax** – Like S2 and B2 these feature e-hack pitching machine. They also have team feeders and remotes for easy loading of balls. But these tunnels have the added bonus of the HitTrax simulator and hitting analysis system. HitTrax captures and displays real-time player data in order to provide immediate feedback to be used for fun or technical development. You can even play a game or just see the result of your hit at Fenway Park or Arizona State Softball Stadium. See below

Although our pitching machines do not have enough room to accommodate slo-pitch style pitching. Manual pitching can easily be done in tunnels B2 and B3.



## **Baseball Hack Attack Machine**

The Hack Attack has a unique three-wheel design that allows you to see the ball clearly and fully all the way through the feeding motion, acceleration and release, just like a live pitcher.

With this design, the hitter sees when to stride and the angle of release, giving him an actual live-arm sense of timing and location. With a quick turn of the Hack Attack dials you can effortlessly throw major league fastballs, and right and left-handed breaking pitches including curveballs, sliders and split fingers.

This exclusive three-wheel design changes the breaking pitch plane by simply adjusting wheel speed dials. (All two-wheel units require time consuming awkward throwing head adjustments to change from fastballs to curveballs or right to left handed breaking pitches.)

The Hack Attack's elevation adjustment handle will raise or lower the pitch. With a simple turn, you can even move the pitch up or down within the strike zone between pitches. (On two-wheel pitching machines it may be necessary to release a locking mechanism, reposition the entire throwing head by tilting it manually and then re-locking the locking mechanism. These are awkward time-consuming adjustments.)

[https://www.youtube.com/watch?v=9K\\_0SAefoVI](https://www.youtube.com/watch?v=9K_0SAefoVI)

## **Team Feeder**

The 150-ball capacity Team Feeder will feed a baseball into the Hack Attack every 5.5 – 6.5 seconds for continuous hitting time of 20 minutes. It will also have a remote control to send pitches from a spot near the hitter.

## **Softball Hack Attack Machine**

The Hack Attack has a unique three-wheel design that allows you to see the ball clearly and fully all the way through the feeding motion, acceleration and release, just like a live pitcher.

With this design, the hitter sees when to stride and the angle of release, giving him an actual live-arm sense of timing and location.

With a quick turn of the Hack Attack dials you can effortlessly throw fastballs, risers, drops, right- and left-handed screwballs up and into the hitters.

This exclusive three-wheel design changes the breaking pitch plane by simply adjusting wheel speed dials. (All two-wheel units require time consuming awkward throwing head adjustments to change from fastballs to curveballs or right to left handed breaking pitches.)

The Hack Attack's elevation adjustment handle will raise or lower the pitch. With a simple turn, you can even move the pitch up or down within the strike zone between pitches. (On two-wheel pitching machines it may be necessary to release a locking mechanism, reposition the entire throwing head by tilting it manually and then re-locking the locking mechanism. These are awkward time-consuming adjustments.)

The Throwing head of the Hack Attack pivots instantly in any direction for all fungo work including deep fly balls that can drive fielders to the fence, slicing line drives, catcher's pop-ups with reverse spin, towering infield pop-ups, and grounders.

<https://www.youtube.com/watch?v=D0lXrXWrLag>

### **Team Feeder**

The 75-ball capacity Team Feeder will feed a softball into the Hack Attack every 5.5 – 6.5 seconds for continuous hitting time of 20 minutes. It also has a remote control to send pitches from a spot near the hitter.

### **e-Hack Attack Electronic Baseball Pitching Machine**

The Baseball e-Hack Attack is our Programmable pitching machine. In seconds you will be able to dial in any change in speed, location and pitch type to deliver any fastball, right or left-hand breaking pitch, sliders or change-ups.

Pitches can be set in any sequence, weighted or random, to allow a hitter to work on weaknesses or to prepare for an upcoming pitcher.

With the complete vision and timing of the Hack Attack (ball will not be coming out of a black box), this unit will provide the most realistic batting practice possible...it will truly be "just like a live pitcher."

Includes team feeder and remote

<https://www.youtube.com/watch?v=7WjNd2EA31U>

## **e-Hack Attack Electronic Softball Pitching Machine**

The softball e-Hack Attack is our Programmable pitching machine. In seconds you will be able to dial in any change in speed, location and pitch type to deliver any fastball, riser, drop, right- and left-handed screwball up and into the hitters.

Pitches can be set in any sequence, weighted or random, to allow a hitter to work on weaknesses or to prepare for an upcoming pitcher.

With the complete vision and timing of the Hack Attack (ball will not be coming out of a black box), this unit will provide the most realistic batting practice possible...it will truly be "just like a live pitcher."

Includes team feeder and remote

<https://www.youtube.com/watch?v=7FWVJOYSPzq>

## **HitTrax Simulator**

HitTrax is the first and only baseball/softball simulator in the market. It offers players personalized statistics helping them become more in-tune with their playing techniques when practicing in an indoor training environment. It does this by transforming any batting cage into a hi-tech analytics and stats center enabling players to enhance their hitting and pitching techniques before stepping onto the field.

"HitTrax captures and displays real-time player data in order to provide immediate feedback to greatly enhance training, as well as provide valuable metrics and reports for improving player performance," said Tom Stepsis, Director of Marketing at InMotion Systems.

Now every baseball and softball player has the ability to achieve perfection at the plate, especially with the system's latest addition: a new high-speed video capture option, called the VCAM (Video Capture and Analysis Module).

Softball - <https://www.youtube.com/watch?v=rO57ARljXro>

Baseball - <https://www.youtube.com/watch?v=dwz6zgYQmiE>